



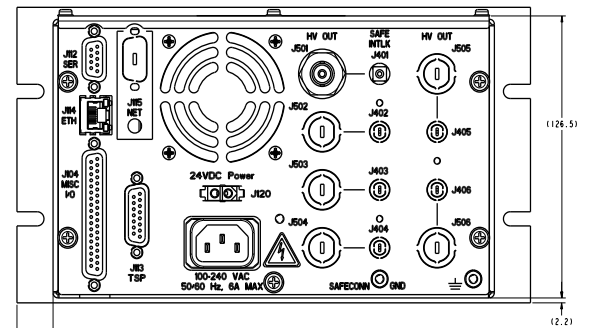
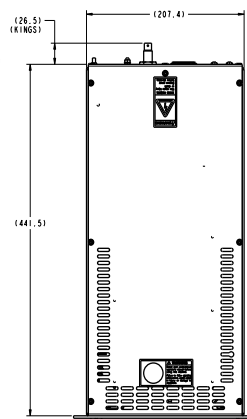
DIGITEL™ QPC Quad Pump Controller



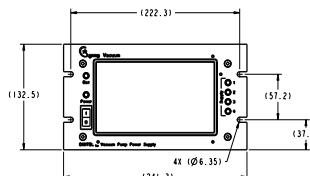
TECHNICAL SPECIFICATIONS

INPUT POWER	
Voltage	100-240 volts
Frequency	50-60 Hz
OUTPUT POWER	
Independent Outputs	1-4
Open Circuit Voltage	+/-3000-7000 vdc programmable
Current (maximum)	125 mA
Watts (maximum)	125
Resolution	1 nA
HIGH VOLTAGE CONNECTIONS	
1-6, 10kV SHV or Fischer	
DISPLAY	
Type	Wide VGA touchscreen Color LCD
Readouts	Pressure, current, voltage, and programmable options
ANALOG OUTPUTS	
Voltage	linear, configurable
Current/Pressure	linear or logarithmic, configurable
SETPOINTS	
Four relay, four TTL	
COMMUNICATIONS	
Local/Remote/Full	
Ethernet	
Serial: 232, 422, 485	
CONFORMITY TO NORMS	
EN 55011 Class A, IEC 801-2	
EN 801-3, IEC 801-4, EN 61010-1	
WEIGHT, KG (LBS)	
9.5 (21)	
SIZE	
3U high, 1/2 rack wide	
438 mm (17.2 in.) deep	
ADDITIONAL FEATURES	
SAFECONN	
AUTOSTART/AUTORUN	

DIMENSIONAL DETAILS*



BACK PANEL

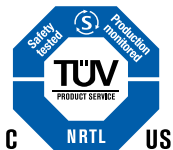


*Six outputs shown. Alternative configurations available at www.gammavacuum.com

STANDARD OPTIONS*

High Voltage		Polarity		Connectors	Connections/ Channle	Input Voltage		Communications	Remote Enable	TSP/NEG
1	One Section	P	Positive	S 10kV SHV (SAFECONN)	1 One Ouput	US110	US 110 plug	S Serial/Ethernet	S Standard	N Coming Soon!
2	Two Sections	N	Negative	F Fischer (Interlock)	2 Two Ouputs	US220	US 220 plug			
3	Three Sections				3 Three Ouputs	EC230	EC 230 plug			
4	Four Sections				4 Four Ouputs	UK240	UK 240 plug			
					5 Five Ouputs	AU230	AU 230 plug			
					6 Six Ouputs					

*Configured part numbers and pricing are available at www.gammavacuum.com.



GAMMA VACUUM

2915 133rd Street West
 Shakopee, MN 55379 | USA
 800.237.3603 T | 952.445.4841 P
 952.445.7615 F

gammavacuum.com | info@gammavacuum.com

a division of

