



# DIGITEL™ TSP

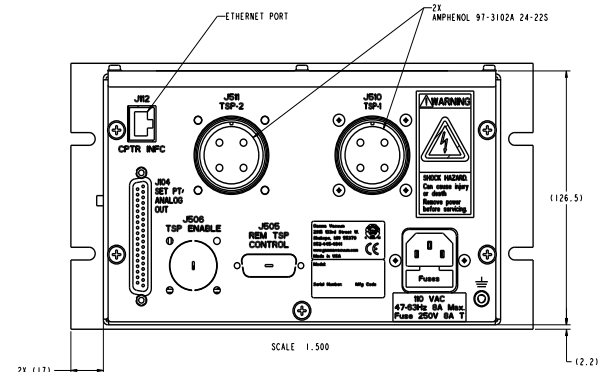
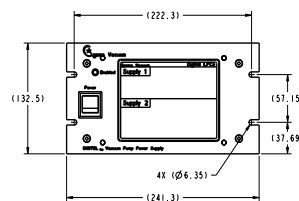
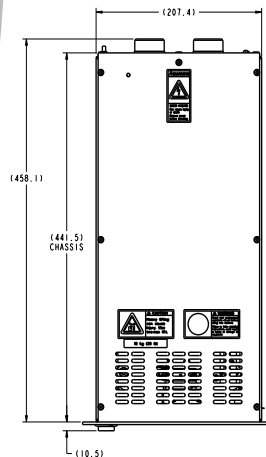
## Titanium Sublimation Pump Controller



### TECHNICAL SPECIFICATIONS

<b>INPUT POWER</b>	
Voltage	90-130 or 200-240 VAC
Frequency	48-62 Hz
<b>OUTPUT POWER</b>	
Independent Outputs	1
Open Circuit Voltage	+19 VAC
Current (maximum)	55A
Watts (maximum)	850 W
Resolution	0.1A
<b>HIGH CURRENT CONNECTIONS</b>	
1-2 MS Style, Configurable	
<b>DISPLAY</b>	
Type	1/4 VGA touchscreen LCD
Readout	Current, on-time, and programmable options
<b>ANALOG OUTPUTS</b>	
linear configurable	
linear or logarithmic, configurable	
<b>CONTROL MODES</b>	
Manual, programmed, or remote	
<b>COMMUNICATIONS</b>	
Local/Remote/Full	
Ethernet	
Serial: 232, 422, 485	
<b>CONFORMITY TO NORMS</b>	
EN 55011 Class A, IEC 801-2	
EN 801-3, IEC 801-4, EN 61010-1	
<b>WEIGHT, KG (LBS)</b>	
16.8 (37)	
<b>SIZE</b>	
3U high, 1/2 rack wide	
438 mm (17.2 in.) deep	
<b>ADDITIONAL FEATURES</b>	
TSP Enable	

### DIMENSIONAL DETAILS

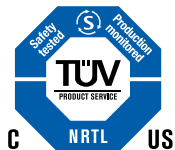


TSP2 BACK PANEL  
ETHERNET OPTION

**STANDARD OPTIONS\***

High Current		Input Voltage		Communications		Remote Enable		TSP/NEG	
0	Remote Only	US110	90-130 volts US 110 plug	232	Serial 232	N	Not Installed	N	Not Installed
1	One Output	US220	200-240 volts US 220 plug	422	Serial 422	HVE	Installed	TSP	Single Remote TSP
2	Two Outputs	EC230	200-240 volts EC 230 plug	485F	Serial 485 Full duplex			DTSP	Dual Remote TSP
		UK240	200-240 volts UK 240 plug	485H	Serial 485 Half duplex			NEG	Single Remote NEG
		AU230	200-240 volts AU 230 plug	E	Ethernet			DNEG	Dual Remote NEG

\*Configured part numbers and pricing are available at [www.gammavacuum.com](http://www.gammavacuum.com).

**GAMMA VACUUM**

2915 133rd Street West  
Shakopee, MN 55379 | USA  
800.237.3603 T | 952.445.4841 P  
952.445.7615 F

[gammavacuum.com](http://gammavacuum.com) | [info@gammavacuum.com](mailto:info@gammavacuum.com)